

Product Presentation

PORTABLE **ÆNOFLUX®** | P40 P50 P70

Flowmeter for all types of juices

Can be used in a pumping line

- Economical, compact flowmeter
- Measures all volumes
- Easy to install
- Does not require any maintenance

TECHNICAL FEATURES

- Instantaneous flowmeter (99.7% accuracy).
- Volume meter on 2 independent adding devices (one for each measurement direction).
- Reset button on the surface.
- Available in three diameters DN40, DN50 and DN70 according to standards (MÂCON, DIN, SMS, etc.).

ÆNOFLUX® | P70



ÆNOFLUX® | P40



ÆNOFLUX® | P50




ELECTRICAL CONNECTIONS

- 10 meters of electrical cable with a standard plug.

Non-contractual pictures - In the event of a quality concern, PMH Vinicole reserves the right to improve the technical specifications of their products at any time and without notice. 01/2024

 Conforms with machine regulations

 Designed and manufactured in FRANCE

PMH VINICOLE

HARVEST RECEPTION & INNOVATIVE SOLUTIONS

www.pmh-vinicole.fr

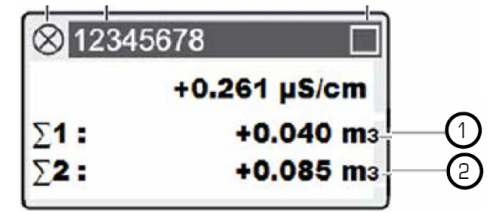
APPLICATION

Instantaneous flow display:



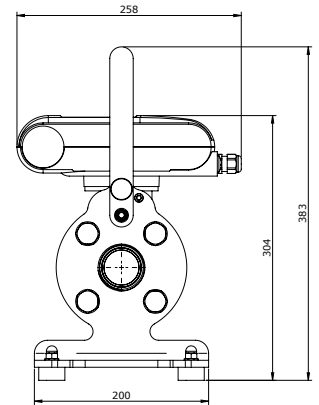
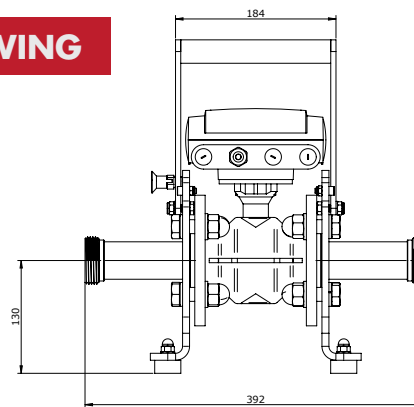
- ① Instant flow (99.7% accuracy)
- ② Unit of measurement
- ③ Display in the form of a bar graph

Instantaneous flow display:

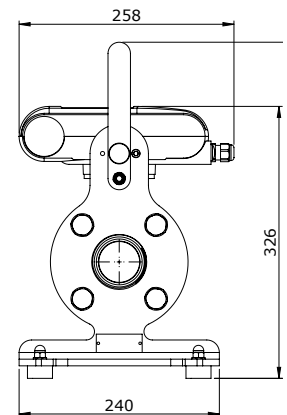
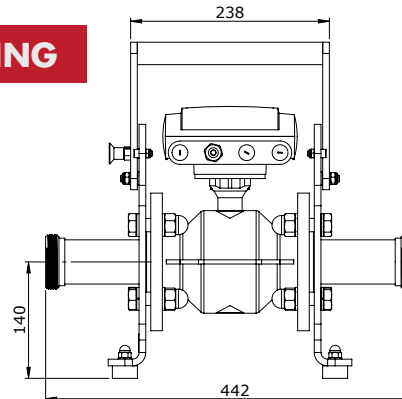


- ① Adding device 1
- ② Adding device 2

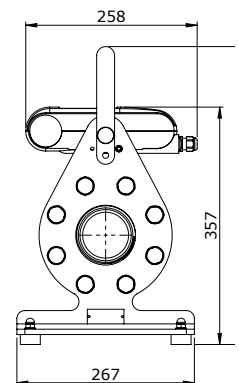
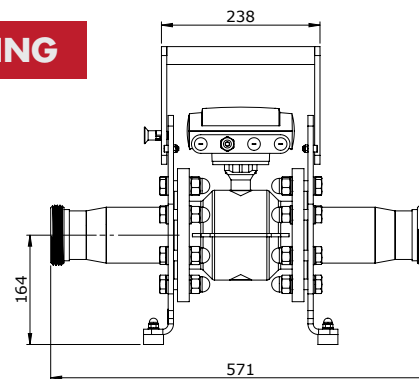
ÆNOFLUX® | P40 - DIMENSIONED DRAWING



ÆNOFLUX® | P50 - DIMENSIONED DRAWING



ÆNOFLUX® | P70 - DIMENSIONED DRAWING



Non-contractual pictures - In the event of a quality concern, PMH Vinicole reserves the right to improve the technical specifications of their products at any time and without notice. 01/2024