

Full harvest, mechanical harvest

Can be used alone or included in the PMH Vinicole receiving line

Hinge opening design

Quick opening and easy extraction from the grate and the spiked roller

TECHNICAL FEATURES:

- Opening, disassembly and washing in a few minutes
- Very robust construction: all stainless steel
- Draining feed hopper with an axial regulator driven by the spiked shaft and recovery of juice DN50 not Macon
- Rotating grate and stainless steel spiked roller with soft-tipped rubber blades
- Driving and adjustment of the speed via the electronic motor regulator
- Mounted on 4 pivoting wheels with brakes
- Opening hatch through quarter-turn safety lock
- Plastic canvas sleeve mounted on the exit of the stemmer

ELECTRICAL CONNECTIONS

- 10 metres of electric cable with standard jack
- Equipped with its forward/reverse switch and emergency stop button

OPTION

ADJUSTABLE AND RETRACTABLE PRESSURE RAM

FR14 type

- Driven via a 1.1 kW geared motor
- Rubber threaded cylinders for food products
- Adjustable spacing from 3 to 8mm via a calibrated wheel for a very precise pressing of the harvest
- Plastic canvas sleeve mounted on the exit of the pressure ram

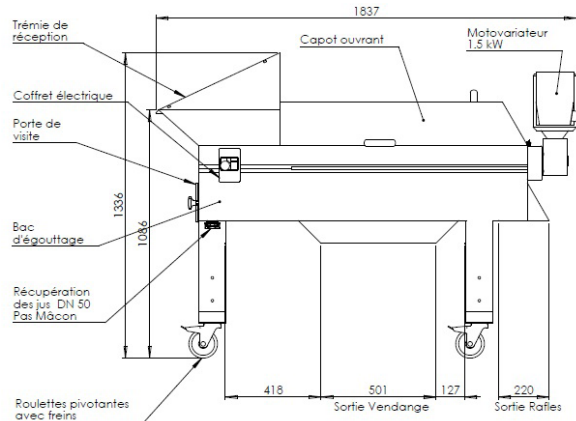
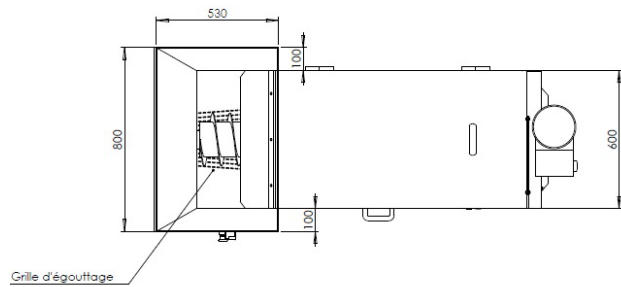
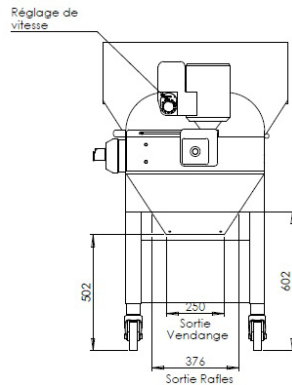


The FR14 pressure ram exists in a portable version or on a stainless steel cart for direct use on the vat or after the sorting table



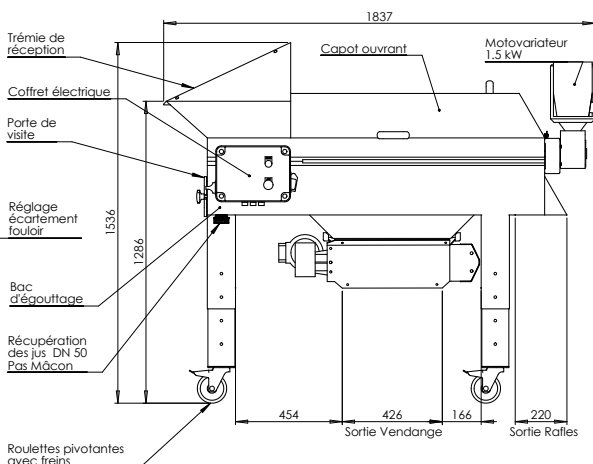
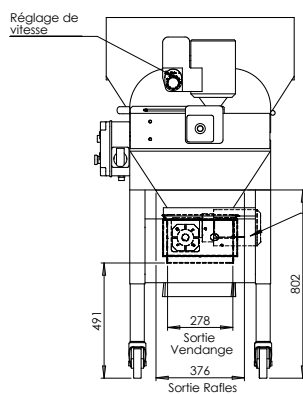
ÆNOGRAPPE® | OE16

- Flow:
 - Full harvest: 8 to 12 T/h
 - Mechanical harvest: 10 to 16 T/h
- Power: 1.5 kW
- Weight: 155 kg
- Hopper Dimensions: 800 x 530 mm
- Three types of grates to choose from:
 - Stainless steel grill with Ø30 and 25 mm double perforated stamped round holes
 - Stainless steel grate with Ø22 mm stamped round holes
 - Stainless steel square meshing grate with 30 mm spacing



ÆNOGRAPPE® - PRESSURE RAM | OE16

- Flow: 8 to 16 T/h
- Power: 1.5 kW + pressure ram 1.1 kW
- Weight: 215 kg
- Hopper Dimensions: 800 x 530 mm
- Three types of grates to choose from:
 - Stainless steel grill with Ø30 and 25 mm double perforated stamped round holes
 - Stainless steel grate with Ø22 mm stamped round holes
 - Stainless steel square meshing grate with 30 mm spacing



Non-contractual pictures - In the event of a quality concern, PMH Vinicole reserves the right to improve the technical specifications of their products at any time and without notice. 04/2018

ZA - 41 allée de la Croix des Hormes - 69250 Montanay
Tel. +33 (0)4 72 21 83 00 - Fax +33 (0)4 72 51 43 17
info@pmh-vinicole.fr

PMH VINICOLE

TRADITIONAL MATERIALS & INNOVATIVE SOLUTIONS

www.pmh-vinicole.fr